

科技创新 完美服务 品质达优

Drum Type Magnetic Separator

筒式磁选机



WWW.KEMEID.COM

湖南科美达电气股份有限公司
HUNAN KEMEIDA ELECTRIC CO.,LTD.

公司地址：中国湖南省岳阳市科美达路 8 号

Add: 8 Kemeida Road, Yueyang, Hunan, China

邮编 (P.C): 414000

电话 (Tel): +86-730-8721001 8721888

传真 (Fax): +86-730-8722555

<http://www.kemeid.com>

E-mail: kmd@kemeid.com



KEMEIDA

Contents 目录

干式筒式磁选机	02
Dry Type Drum Magnetic Separator	
概述	02
General	
工作原理	03
Working Principle	
设备特点	03
Main Features	
CTCG系列筒式磁选机	04
CTCG Series Drum Type Magnetic Separator	
单筒型	04
Single Drum Type	
双筒型	06
Double Drum type	
CTFG系列筒式磁选机	07
CTFG Series Drum Type Magnetic Separator	
湿式筒式磁选机	09
Wet drum type magnetic separator	
概述	09
General	
工作原理	10
Working Principle	
设备特点	11
Main Features	
CT(S B N)系列产品	13
CT(S B N)Series Products	
CTS系列湿式筒式磁选机	13
Wet Drum Type Permanent-magnetic Separator Series CTS	
CTB系列湿式筒式磁选机	16
CTB Series Wet Drum Type Magnetic Separator	
CTN系列湿式筒式磁选机	19
CTN Series Drum Type Wet Magnetic Separator	

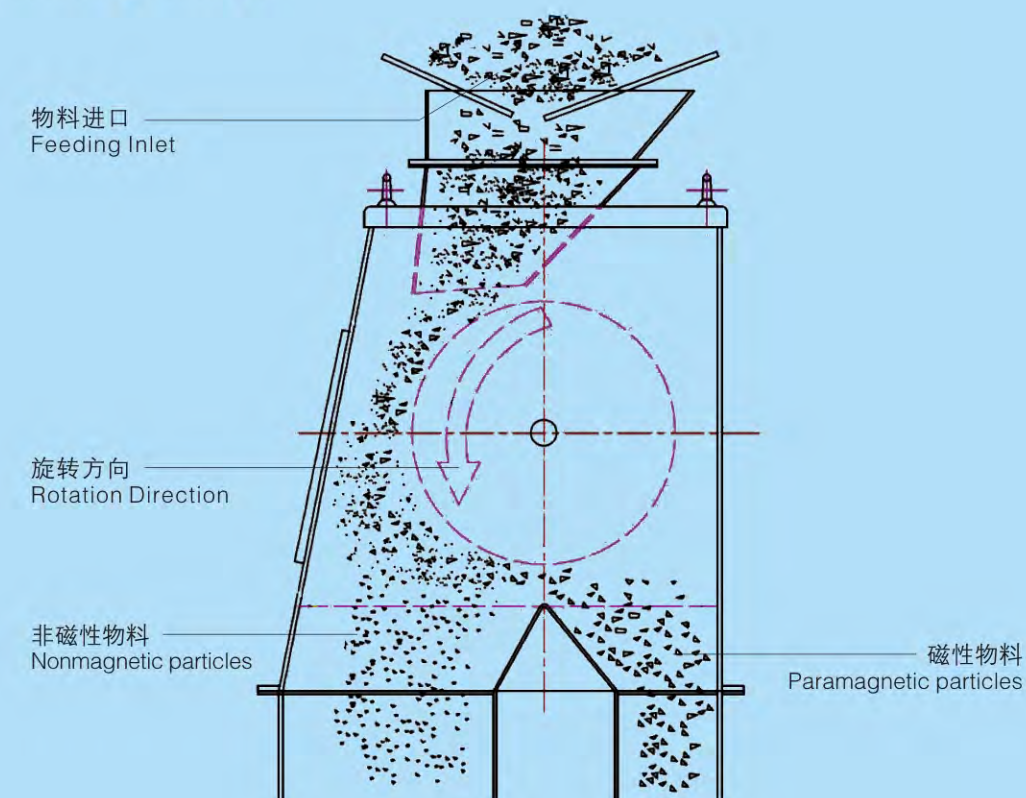
干式筒式磁选机 Dry Type Drum Magnetic Separator

干式永磁筒式磁选机，是一种从干性细颗粒物料中连续自动除铁的设备；内部采用稀土永磁材料提供磁场，磁场分布在筒体的圆周方向且按使用要求呈一定角度（ 120° - 200° ，标准设计为 175° ），在不锈钢滚筒外产生梯度磁场，能有效地去除或提纯物料中的铁、铁屑、氧化铁及其他磁性物。当物料落至转动的滚筒上时，物料中的磁性物则被强大的磁力吸附在筒体表面上，并随滚筒转动，当磁性物被带至无磁区域时，在重力及离心力的作用下被抛入弃铁斗中；本身无磁性的物料，则不随筒体转动而被直接抛入出料斗中；从而实现物料中磁性物与非磁性的分离，实现全自动除铁或提纯。

Dry type drum magnetic separator is a kind of automatic separator that can continuously remove iron particles from the dry fine materials. Rare earth permanent magnetic material are adopted to generate magnetic field, the field is distributed in peripheral direction around the drum body, and forming some degrees (120° - 200° , standard design is 175°), the high gradient field is generated outside the SS drum which can effectively remove the iron, scrap iron, ferric oxide & other ferromagnetic materials. When materials falling to the rotating drum, the paramagnetic particles are attracted by the drum surface through the strong magnetic force and rotating with the drum, then they are carried to the non-magnetic area, under the gravity & centrifugal force, they will be casted into the iron collecting box, whilst the nonmagnetic materials will be falling to the outlet bucket, thus the aim of removing paramagnetic particles from the nonmagnetic particles is fulfilled.



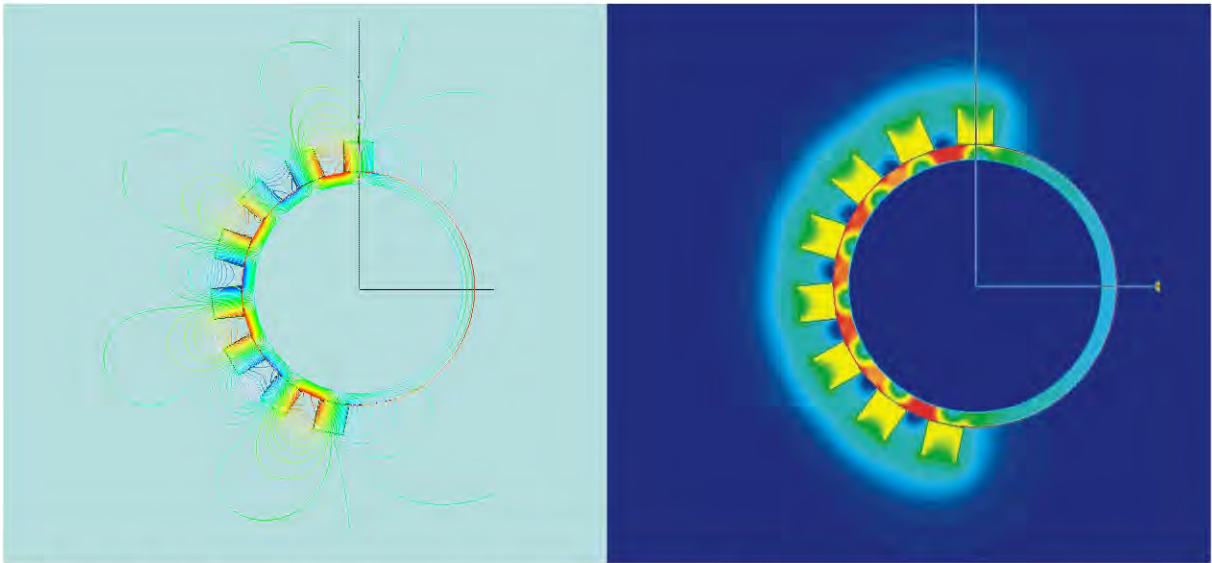
工作原理 Working Principle



主要特点 Main Features

- ☆ 强磁永磁磁源，无需励磁电源，低能耗，磁力稳定。
Strong permanent magnetic source, with no excitation power, low power consumption & stable magnetic force.
- ☆ 高强筒体表面磁场，梯度大，吸力强。
High strong surface magnetic field, high gradient, powerful attracting force.
- ☆ 多极磁场结构，提高磁翻转效应，提高磁分离度
Multipolar field structure which can enhance magnetic turn effect & magnetic separator degree.
- ☆ 筒皮采用优质非磁性不锈钢及耐磨钢制造。
Drum surface adopts excellent nonmagnetic SS & abrasion resistant steel.
- ☆ 自动卸铁，无需人工干预。
Automatic iron removing, no manual work needed.
- ☆ 箱体式法兰接口结构，可接入封闭式管道生产线。
Box type flange interface structure, it can be connected to the closed pipe production line.

干式筒式磁选机
Dry Type Drum Magnetic Separator



磁力线分布图Magnetic Force Line Layout Diagram

磁场图 Magnetic Field Diagram

CTCG系列筒式磁选机
CTCG Series Drum Type Magnetic Separator

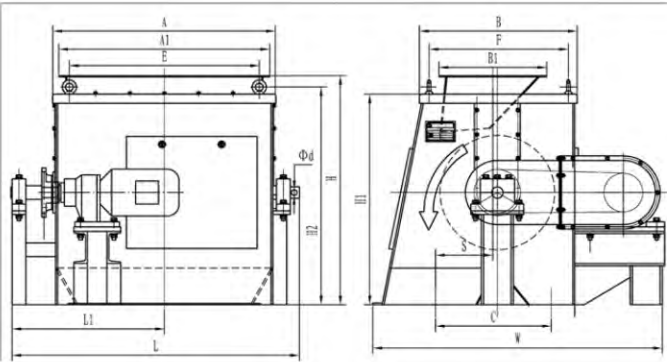
单筒型 Single Drum Type

CTCG系列筒式磁选机主要用于粒度 $\leq 5\text{mm}$ 的干细粉物料中连续自动除去或选取磁性物料的磁选设备。广泛应用于玻璃、陶瓷、化工、磨料、食品、塑料、非金属矿、石英等物料。

该系列产品筒体表面磁场可达12000Gs。

CTCG Series drum type magnetic separators are automatic equipment mainly used to remove iron particles continuously from dry & fine powers with granularity $\leq 5\text{mm}$. This equipment is widely used in chemistry, ceramic, glass, abrasive material, food, plastic, non-metal ore, quartz, etc.

Surface field of this series can reach to 12000Gs.



单筒型 Single Drum Type

技术参数表 Technical Parameters

机 型 Model	筒径 Dia.(mm)	筒长 Drum Length (mm)	筒表磁场 Surface magnetic induction (Gs)	圆筒转速 Drum rotate speed (r/min)	给料粒度 Feeding granularity ($\leq \text{mm}$)	处理量 Handling capacity ($\leq \text{m}^3/\text{h}$)	传动功率 Driving power (kW)	外形尺寸(mm) Overall Dimension L×W×H	质量 Weight (kg)
CTCG-3270G1	320	700	5000	49	5	22	1.1	810x1100x660	460
CTCG-3270G2			7000						540
CTCG-3270G3			9000						630
CTCG-4070G1	400	700	6000	41	5	35	1.5	970x1140x760	570
CTCG-4070G2			9000						620
CTCG-4070G3			12000						710
CTCG-4090G1	400	900	6000	41	5	50	1.5	1260x1140x760	630
CTCG-4090G2			9000						690
CTCG-4090G3			12000						780
CTCG-5090G1	500	900	6000	35	5	65	2.2	1260x1270x1000	980
CTCG-5090G2			9000						1100
CTCG-5090G3			12000						1170
CTCG-50120G1	500	1200	6000	35	5	85	3.0	1560x1270x1000	1280
CTCG-50120G2			9000						1430
CTCG-50120G3			12000						1530

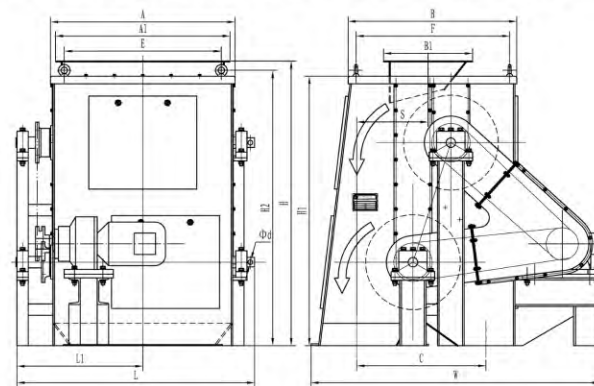
注1: 可按客户要求定制其它安装尺寸及磁场等级的产品, 设备要求请定货时注明。系列等级如下(Gs): 1200, 1500, 2000, 2500, 3000, 3500, 4000, 4500, 5000, 6000, 7000, 8000, 9000, 10000, 11000, 12000。

Note: 1. Installation size & field can be customized by requirements of customers, please indicate when placing order. Field grades are as below(Gs): 1200, 1500, 2000, 2500, 3000, 3500, 4000, 4500, 5000, 6000, 7000, 8000, 9000, 10000, 11000, 12000。

双筒型 Double Drum type

双筒型一般设计为上筒磁场强度比下筒低，且物料在磁选机内经过两次磁选过程，具有除净率高，设备结构紧凑的优点。

Generally the surface field of upper drum is less strong than the lower one, and the structure of this series is compact. After separating twice, the beneficiation rate is high.



双筒型 Double Drum type

技术参数表 Technical Parameters

机 型 Model	筒径 Drum Dia.(mm)	筒长 Drum Length (mm)	筒表磁场 Surface magnetic induction (Gs)	圆筒转速 Drum rotate speed (r/min)	給料粒度 Feeding granularity (≤mm)	处理量 Handling capacity (≤m ³ /h)	传动功率 Driving power (kW)	外形尺寸(mm) Overall Dimension L×W×H	质量 Weight (kg)
CTCG2-3270G1	320	700	3000 5000	49	5	22	2.2	810x1350x1000	850
CTCG2-3270G2			4000 7000						920
CTCG2-3270G3			4000 9000						1000
CTCG2-4070G1	400	700	4000 6000	41	5	35	3	970x1360x1200	970
CTCG2-4070G2			4000 9000						1020
CTCG2-4070G3			4000 12000						1100
CTCG2-4090G1	400	900	4000 6000	41	5	50	4	1260x1360x1200	1180
CTCG2-4090G2			4000 9000						1240
CTCG2-4090G3			4000 12000						1330
CTCG2-5090G1	500	900	4000 6000	35	5	65	4	1260x1530x1500	1750
CTCG2-5090G2			4000 9000						1860
CTCG2-5090G3			4000 12000						1950

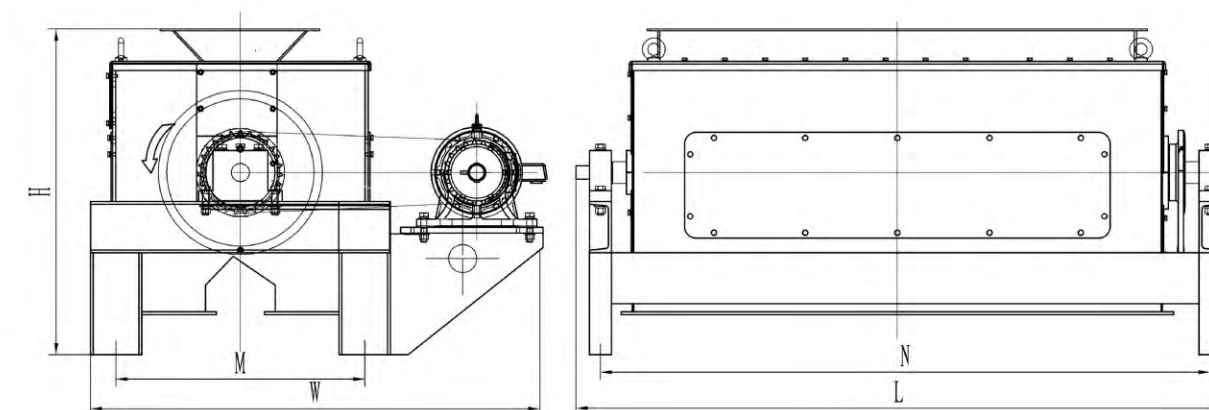
应用实例及效果 Application Example & Effect



CTFG系列筒式磁选机 CTFG Series Drum Type Magnetic Separator

CTFG系列筒式磁选机主要用于粒度≤30mm细颗粒料中连续自动除去或选取磁性物料的干式磁选设备。广泛应用于低品位磁铁矿预选、精选及非磁铁矿的除铁。该系列产品采用多磁极大包角设计，增加磁翻转频率；筒体表面采用耐磨陶瓷，增加筒体使用寿命。

CTFG Series drum type magnetic separators are automatic devices mainly used to remove iron particles continuously from dry & fine powers with granularity ≤30mm. This equipment is widely used in primary separation, beneficiation of low grade magnetite, iron removing of non-magnetic ore. Products of this series adopt multiple poles & large wrap angle design to increase magnetic turn frequency, drum surface is made of wear-proof ceramic, thus the service life of drum body is long.



技术参数表 Technical Parameters

机 型 Model	筒径 Drum Dia.(mm)	筒长 Drum Length (mm)	筒表磁场 Surface magnetic induction (Gs)	圆筒转速 Drum rotate speed (r/min)	给料粒度 Feeding granularity (≤mm)	处理量 Handling capacity (≤m3/h)	传动功率 Driving power (kW)	外形尺寸(mm) Overall Dimension L×W×H	质量 Weight (kg)
CTFG-69	600	900	按物料特性 及客户要求 确定磁感应 强度 Magnetic flux density can be decided by material characters & customers' requirements.	40-65	30	5-10	3.0	1320x1520x1300	1160
CTFG-612	600	1200				6-13	4.0	1620x1520x1300	1450
CTFG-618	600	1800				10-20	5.5	2220x1520x1300	2110
CTFG-712	750	1200	30-50	7-14		4.0	1650x1650x1450	1750	
CTFG-718	750	1800		11-23		5.5	2250x1650x1450	2580	
CTFG-912	900	1200	25-45	8-16		5.5	1650x1900x1600	2380	
CTFG-918	900	1800		12-25		7.5	2250x1900x1600	3270	
CTFG-924	900	2400		16-32		11	2900x1900x1600	4150	
CTFG-1012	1050	1200	20-40	9-18		5.5	1700x2100x1750	2790	
CTFG-1018	1050	1800		13-26		7.5	2300x2100x1750	4350	
CTFG-1024	1050	2400		18-36		11	2900x2100x1750	4970	
CTFG-1030	1050	3000		22-45		15	3500x2200x1750	6270	

注：按物料特性及客户要求确定磁感应强度，设备要求请定货时注明。系列等级如下(Gs)：1200, 1500, 2000, 2500, 3000, 3500, 4000, 4500, 5000, 6000, 7000, 8000。

Note : magnetic flux density can be decided by material characters & customers' requirements, for requirements of equipment, please indicate when placing order. Series grades are as below(Gs): 1200, 1500, 2000, 2500, 3000, 3500, 4000, 4500, 5000, 6000, 7000, 8000.

湿式筒式磁选机
Wet drum type magnetic separator

CT(S、B、N)磁选机适用于矿山的磁铁矿、磁黄铁矿、焙烧矿、钛铁矿等磁性物料的湿式磁选；也用于煤、非金属矿、建材等非磁性物料的除去混杂的磁性矿物作业；以及选煤作业中的磁重介质回收；铁矿中低浓度矿浆的浓缩和磁铁矿物的富集；用于清除非金属矿中的铁磁性杂质；处理高梯度强磁机的给矿，清除其中的磁性或较弱磁性矿物及其连生体，防止磁介质堵塞。

CT (S.B and N) series separators are applied in wet materials such as magnetite, pyrrhotite, calcined ore and limonite; also it can be used to remove the mixed iron particles in coal, non-metal minerals, building industry. Meanwhile it can be used in recycling of magnetic heavy medium in coal dressing, concentration of low density iron slurry and beneficiation of magnetite, removal of ferromagnetic impurities in non-ferrous ores, feeding of high gradient magnetic separator, by removing the ferromagnetic magnetic or weakly magnetic mineral & their copolymer, magnetic medium clogging is avoided.

CT(S、B、N)型磁选机采用磁辊式结构，适用于粒度0~6mm矿物的湿式粗选、扫选、精选，内部磁极固定，筒体转动。磁场将磁性物料吸附于筒体表面，通过筒体的转动，将磁性被吸物从吸附区移动至卸料区，接近无磁性位置时磁性物料堆集，在重力和冲洗水的冲击下流入精矿槽(磁性矿槽)。

CT (S.B and N) series magnetic separators adopt roller type structure, it is suitable for wet roughing, scavenging, selection of ores with granularity of 0~6mm, inner poles are fixed, and the drum is rotating. Paramagnetic particles are attracted to the drum surface, through the rotation of the drum; the attracted paramagnetic materials can be moved to the discharge zone, when it is near the nonmagnetic area, the paramagnetic particles are gathered together, under the action of flush and gravity, they are leading to the concentrate chute (magnetic chute).

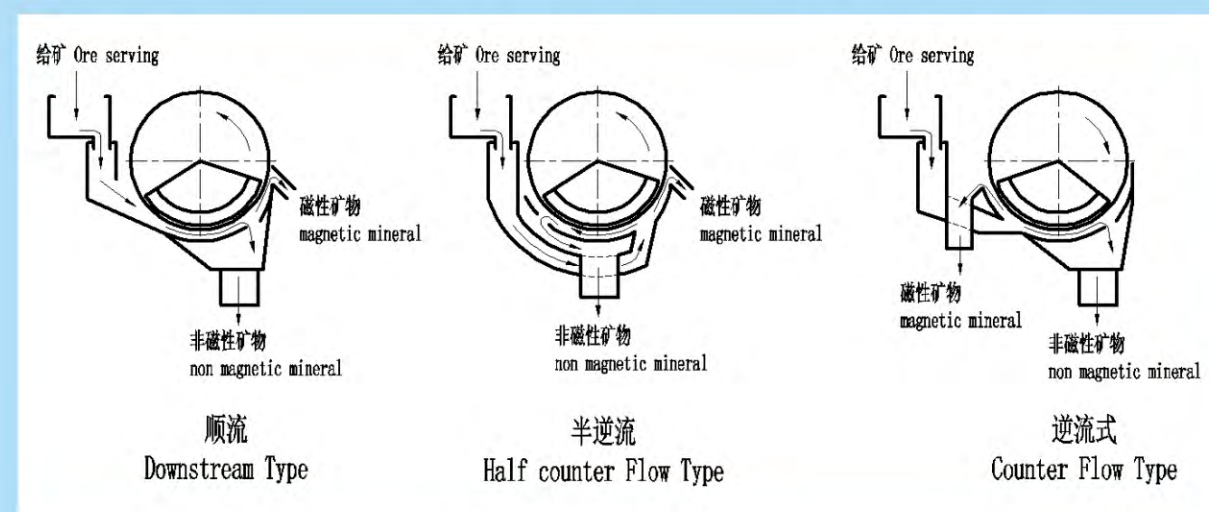
根据用户需要，可提供顺流、半逆流、逆流型及双筒磁选机

According to requirements, downstream, counter flow type, half counter flow type & double drums separators are available.

工作原理 Working Principle

该类设备利用永磁磁系所产生的磁力，将矿浆中的磁性矿物吸引到表面上来，并随着圆筒一起旋转，待脱离磁场作用后在重力和冲洗水的冲击作用下流入磁性矿槽，而非磁性物料从非磁性矿口排除，完成分选作业。

This equipment uses the magnetic force of the permanent magnetic system to carry the paramagnetic particles in the slurry to the surface, and rotating with the drum, after is far from the field, under the gravity and impact force of the flushing water, the magnetic particles will flow to the magnetic chute, and the non-magnetic materials will be discharged from the non-magnetic chute, then separation work is finished.



工作原理图 Working Principle Drawing

圆筒与槽体之间的距离为工作间隙，通常用35~60mm，改变槽体角钢下面的调整垫片，就可以改变工作间隙的大小，间隙大，处理能力大，但磁性矿流失多；间隙小，处理量小，影响生产。

Distance between the drum & the chute is working gap, normally is 35~60mm, by modifying the ad-justing shim of the angle steel of the chute, the working gap can be adjusted, the bigger the working space, the more powerful the dealing capacity, but magnetic mineral passed a lot; the smaller t-he working space, the lower the dealing capacity, production is affected.

排磁性矿处的间隙为15~30mm，它主要根据生产能力确定。间隙小，矿磁性品位增高，处理能力降低，太小不易排矿，一般取20mm。

Working gap of discharging magnetic mineral is 15~30mm, mainly decided by production capacity. The smaller the working gap, the higher the grade of the magnetic mineral, whilst dealing capacity is lower, if the working gap is too smaller, it is not easy to discharge the magnetic mineral, generally the working gap is 20mm.

主要特点 Main Features

☆磁系采用大包角设计，并采用多磁极结构，从而在扫选区内增加了磁翻转次数，缩小了磁翻宽度，提高了磁翻频率，更利于扫选过程中杂质的排出。

Magnetic system adopts multiple poles structure & large wrap angle design to increase magnetic turn frequency and reduce magnetic turn width, and then it will facilitate discharge of impurities.

☆给矿装置由矿箱与给矿管焊接而成，给矿管分布合理，分矿均匀。

The feeding device is welded of ore box and feeding pipe, the feeding pipes are reasonably arrayed, minerals are evenly distributed.

☆磁筒装配完成后，进行密封试验，确保磁筒密封良好。

After magnetic drum assembly is finished, sealing test should be carried out to ensure the good seal situation.

☆设有功能水管能有效冲散矿物和防止矿物淤积。

The functional water pipe can disperse minerals and prevent mineral deposition.

☆合理的结构设计，磁筒与槽体间隙可调，磁系偏转角度可调。

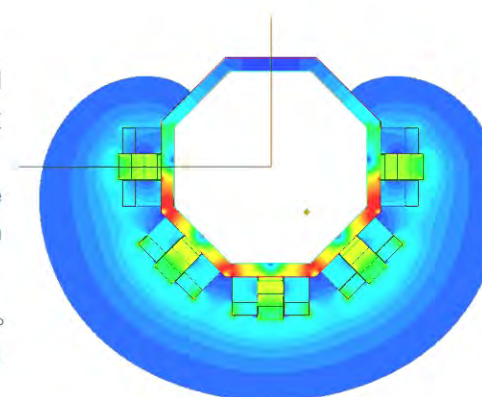
The reasonable structure design, the gap between magnetic drum and chute can be adjusted; the deflexion angle of magnetic system is adjustable.

☆筒表平均磁感应强度范围为100~800mT(1000~8000Gs)

Average magnetic flux density range of the drum surface is 100~800mT (1000~8000Gs).

☆磁选机滚筒及槽体表面的材料为高耐磨陶瓷，厚度3mm，是采用专业有机胶粘结固定，使用寿命长。

Materials of separator roller & chute surface are wear proof ceramic, thickness is 3mm, organic adhesive is used to bond & fix them, and service life is long.



产品及使用现场图片 Products & Onsite Site Pictures



产品及使用现场图片 Products & Onsite Site Pictures



CT (S B N) 系列产品 CT(S B N)Series Products

CTS系列湿式筒式磁选机 Wet Drum Type Permanent-magnetic Separator Series CTS

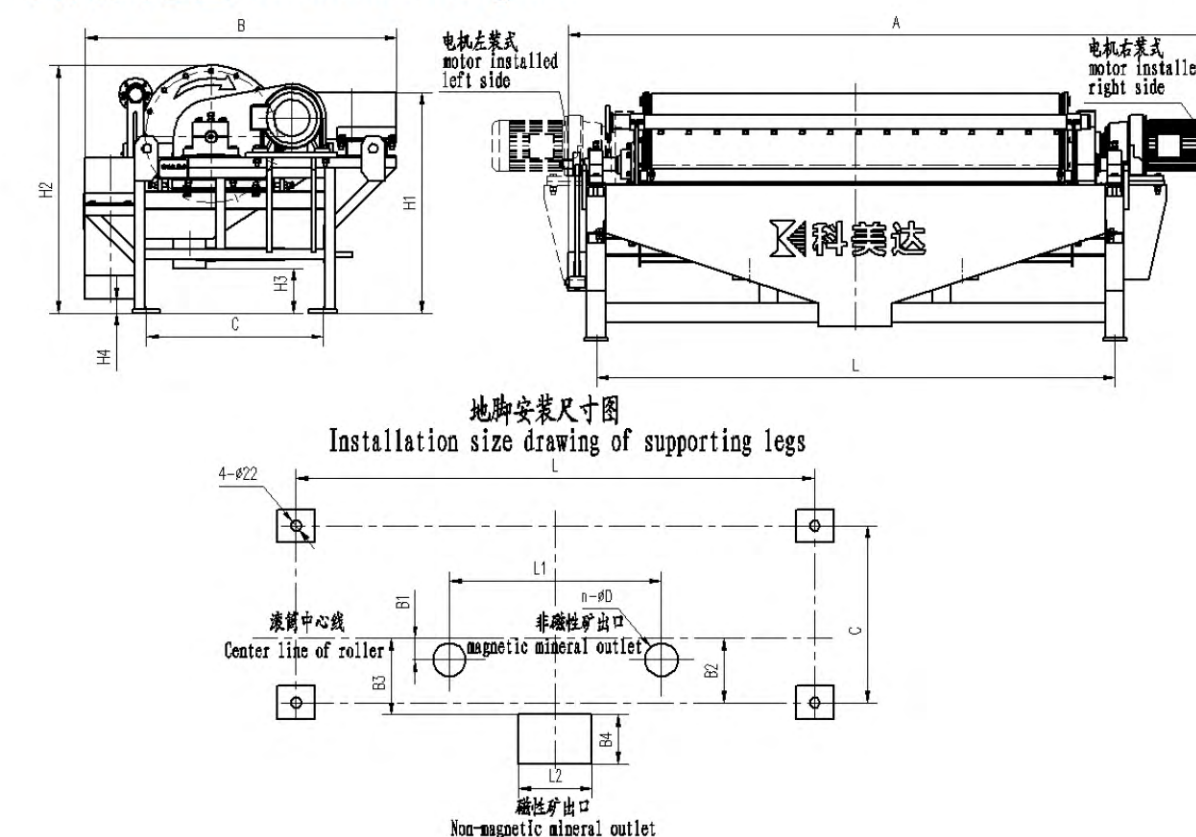
适用范围: CTS系列为顺流式湿式筒式磁选机, 主要用于较大颗粒($\leq 6\text{mm}$)的矿物分选。

Application Scope: CTS series downstream wet drum type separator, mainly used for coarse particles minerals ($\leq 6\text{mm}$).

主要特点: 槽体采用流体学公式计算, 能够选别较大颗粒; 槽体与磁筒间隙可调, 可控制选矿品位。

Main Features: Main features: by fluidics formula to calculate for chute, coarse particles can be separated; the gap between chute and magnetic drum is adjustable, so the grade of mineral can be controlled.

外形尺寸图 Dimensions Diagram



技术参数表 Technical Parameters

型 号 Model	圆筒尺寸 (mm) Drum size		筒表磁场 (mT) Drum Surface magnetic Field	转速 (r/min) Revolving Speed	处理能力 Handling Capacity		电机功率 (kW) Motor Power	质量 Mass (kg)
	筒径 Drum Dia.	筒长 Drum Length			(t/h)	(m3/h)		
CTS-69	600	900	按物料特 性及客户 要求确定 磁感应强度 Magnetic flux density can be decided by material characters & customers ' requirements.	40	7~15	20~50	2.2	1150
CTS-612	600	1200		40	10~20	30~65	2.2	1360
CTS-618	600	1800		40	15~30	45~95	2.2	1800
CTS-712	750	1200		35	15~30	45~95	3	1860
CTS-718	750	180		35	23~45	70~130	3	2510
CTS-912	900	1200		28	23~45	70~130	4	2400
CTS-918	900	1800		28	35~65	105~200	4	3000
CTS-924	900	2400		28	45~85	130~260	4	3600
CTS-930	900	3000		28	55~110	120~340	5.5	4300
CTS-1012	1050	1200		22	25~50	70~150	5.5	3000
CTS-1018	1050	1800		22	38~75	110~230	5.5	3800
CTS-1024	1050	2400		22	50~100	140~300	5.5	4720
CTS-1030	1050	3000		22	63~125	185~380	7.5	5580
CTS-1218	1200	1800		19	45~90	135~280	5.5	5520
CTS-1224	1200	2400		19	60~120	170~370	7.5	6430
CTS-1230	1200	3000		19	72~145	210~440	7.5	7340
CTS-1236	1200	3600		19	90~175	270~530	11	8400
CTS-1530	1500	3000		14	90~180	270~540	11	8950
CTS-1540	1500	40000		14	120~240	350~700	15	10150

注：可按客户要求定制其它安装尺寸及磁场等级的产品，设备要求请定货时注明。磁场系列等级如下(Gs)：2500, 3000,4000, 5000, 6000, 7000,8000。

Note: other installation dimension & field grade products can be customized according to requirements, please indicate when placing order. Magnetic field (Gs) grade as follows: 2500, 3000, 4000, 5000, 6000, 7000 and 8000.

外形及安装尺寸(mm) Outline and installation size(mm)

型 号 Model	A	B	B1	B2	B3	B4	C	D	H1	H2	H3	H4	L	L1	L2	n
CTS-69	2100	1320	120	268	318	200	820	159	1450	1300	150	210	1400	0	200	1
CTS-612	2400	1320	120	268	318		820		1450	1300			1700	0	200	11
CTS-618	3000	1320	120	268	318		820		1450	1300			2300	0	200	1
CTS-712	2450	1500	150	343	393		970		1500	1450			1700	0	200	1
CTS-718	3050	1500	150	343	393		970		1500	1450			2300	900	200	2
CTS-912	2500	1800	150	418	473		1100		1750	1665			1700	600	200	2
CTS-918	3100	1800	150	418	473		1100		1750	1665			2300	900	200	2
CTS-924	3700	1800	150	418	473		1100		1750	1665			2900	1200	250	3
CTS-930	4300	1800	150	418	473		1100		1750	1665			3500	1500	400	4
CTS-1012	2540	2020	150	473	533		1250		1825	1815			1700	600	200	2
CTS-1018	3140	2020	150	473	533		1250		1825	1815			2300	1000	200	3
CTS-1024	3740	2020	150	473	533		1250		1825	1815			2900	1200	250	3
CTS-1030	4340	2020	150	473	533	200	1250	1500	1825	1815	1900	1970	3500	1500	400	4
CTS-1218	3260	2380	160	570	630		1500		1900	1970			2300	900	200	3
CTS-1224	3860	2380	160	570	630		1500		1900	1970			2900	1500	250	4
CTS-1230	4460	2380	160	570	630		1500		1900	1970			3500	2000	400	5
CTS-1236	5060	2380	160	570	630		1500		1900	1970			4100	1800	400	6
CTS-1530	4500	2700	180	880	940		1850		2200	2270			3500	2000	400	6
CTS-1540	5500	2700	180	880	940		1850		2200	2270			4500	2500	400	6

CTB系列湿式筒式磁选机

CTB Series Wet Drum Type Magnetic Separator

适用范围: CTB为半逆流湿式筒式磁选机, 用于铁矿中-低浓度矿浆的浓缩和磁铁矿物的富集、清除非金属矿中的铁磁性杂质等, 回收矿的收得率和品位均适中。

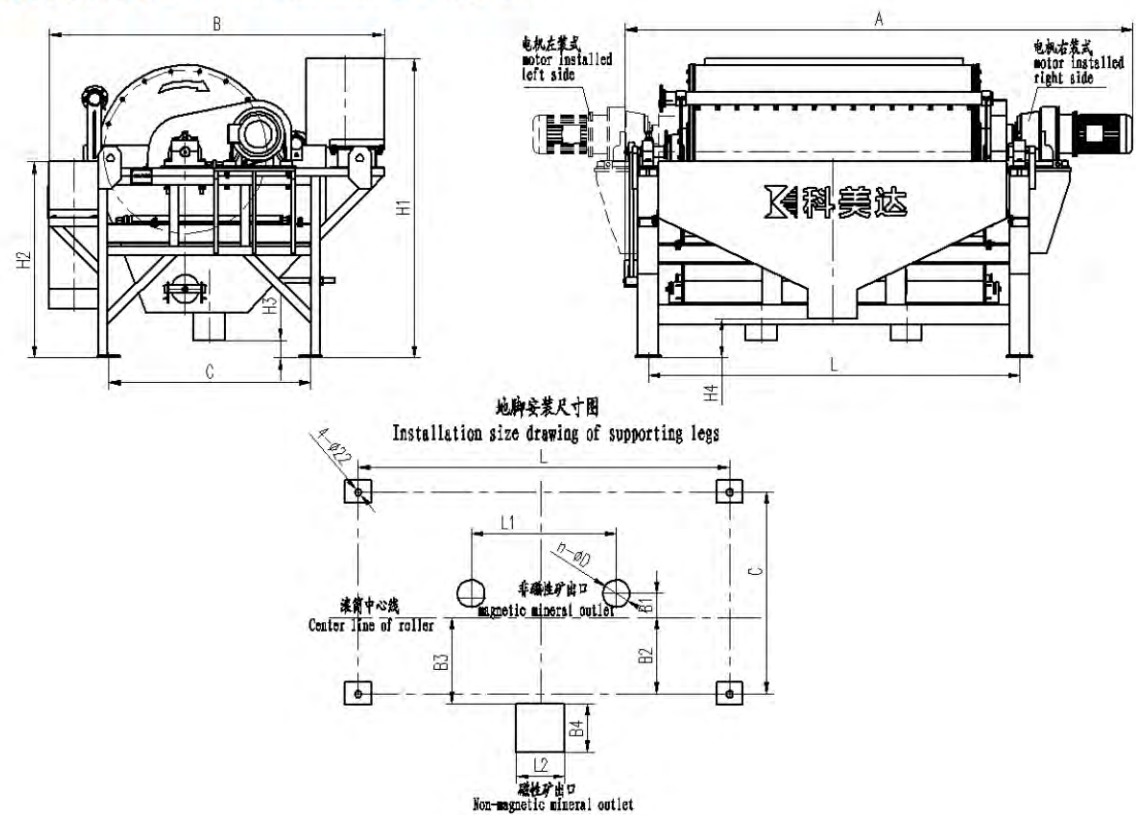
Application Scope: CTB series are half counter flow wet drum type magnetic separators, is used to concentrate the mid-low density slurry of iron ore, and collect magnetic minerals, remove the tramp iron form nonmetallic minerals, recovery rate and grade are medium.

主要特点: 槽体采用流体学公式计算, 能够保证品位的同时提高收得率; 在磁选机的给矿区域加大了冲水管直径, 并且冲水管长短不一, 形成湍流, 使给水更加充分, 从而更有利于提高磁选产量。

Main Features: By fluidics formula to calculate chute, which can ensure concentrate grade meanwhile improve concentrate recovery. Flushing pipes diameter at feeding area is enlarged, and the different length of flushing pipes to form turbulent flow, feeding water is more sufficient, and separation capacity increased.

外形尺寸图

Dimensions Diagram



技术参数表

Technical Parameters

型 号 Model	圆筒尺寸 (mm) Drum size		筒表磁场 (mT) Drum Surface magnetic Field	转速(r/min) Revolving Speed	处理能力 Handling Capacity		电机功率 (kW) Motor Power	质量 Quality
	筒径 Drum Dia.	筒长 Drum Length			(t/h)	(m3/h)		
CTB-69	600	900	按物料特 性及客户 要求确定 磁感应强度 Magnetic flux density can be decided by material characters & customers' requirements.	40	7~15	20~50	2.2	1200
CTB-612	600	1200		40	10~20	30~65	2.2	1400
CTB-618	600	1800		40	15~30	45~95	2.2	1850
CTB-712	750	1200		35	15~30	45~95	3	1910
CTB-718	750	1800		35	23~45	70~130	3	2550
CTB-912	900	1200		28	23~45	70~130	4	2460
CTB-918	900	1800		28	35~65	105~200	4	3050
CTB-924	900	2400		28	45~85	130~260	4	3670
CTB-930	900	3000		28	55~110	120~340	5.5	4390
CTB-1012	1050	1200		22	25~50	70~150	5.5	3100
CTB-1018	1050	1800		22	38~75	110~230	5.5	3880
CTB-1024	1050	2400		22	50~100	140~300	5.5	4000
CTB-1030	1050	3000		22	63~125	185~380	7.5	5670
CTB-1218	1200	1800		19	45~90	135~280	5.5	5620
CTB-1224	1200	2400		19	60~120	170~370	7.5	6550
CTB-1230	1200	3000		19	72~145	210~440	7.5	7460
CTB-1236	1200	3600		19	90~175	270~530	11	8530
CTB-1530	1500	3000		14	90~180	270~540	11	9100
CTB-1540	1500	4000		14	120~240	350~700	15	10300

注: 可按客户要求定制其它安装尺寸及磁场等级的产品, 设备要求请定货时注明。磁场系列等级如下(Gs): 2500, 3000, 4000, 5000, 6000, 7000, 8000。

Note: Installation size & field grade can be customized by requirements of customers, please indicate when placing order. The magnetic field (Gs) grades are as follows: 2500, 3000, 4000, 5000, 6000, 7000 and 8000.

湿式筒式磁选机

Wet drum type magnetic separator

外形及安装尺寸(mm) Outline and installation size(mm)

型号 Model	A	B	B1	B2	B3	B4	C	D	H1	H2	H3	H4	L	L1	L2	n
CTB-69	2100	1280	120	268	318		820		1450	1300			1400	0	200	1
CTB-612	2400	1280	120	268	318		820		1450	1300			1700	0	200	1
CTB-618	3000	1280	120	268	318		820		1450	1300			2300	0	200	1
CTB-712	2450	1540	150	343	393		970		1500	1450			1700	0	200	1
CTB-718	3050	1540	150	343	393		970		1500	1450			2300	900	200	2
CTB-912	2500	1850	150	418	473		1100		1750	1665			1700	600	200	2
CTB-918	3100	1850	150	418	473		1100		1750	1665			2300	900	200	2
CTB-924	3700	1850	150	418	473		1100		1750	1665			2900	1200	250	3
CTB-930	4300	1850	150	418	473	200	1100	159	1750	1665	150	210	3500	1500	400	4
CTB-1012	2540	2075	150	473	533		1250		1825	1815			1700	600	200	2
CTB-1018	3140	2075	150	473	533		1250		1825	1815			2300	1000	200	3
CTB-1024	3740	2075	150	473	533		1250		1825	1815			2900	1200	250	3
CTB-1030	4340	2075	150	473	533		1250		1825	1815			3500	1500	400	4
CTB-1218	3260	2430	160	570	630		1500		1900	1970			2300	900	200	3
CTB-1224	3860	2430	160	570	630		1500		1900	1970			2900	1500	250	4
CTB-1230	4460	2430	160	570	630		1500		1900	1970			3500	2000	400	5
CTB-1236	5060	2430	160	570	630		1500		1900	1970			4100	1800	400	6
CTB-1530	4500	2750	180	880	940		1850		2200	2270			3500	2000	400	6
CTB-1540	5500	2750	180	880	940		1850		2200	2270			4500	2500	400	6

CTN系列湿式筒式磁选机

CTN Series Drum Type Wet Magnetic Separator

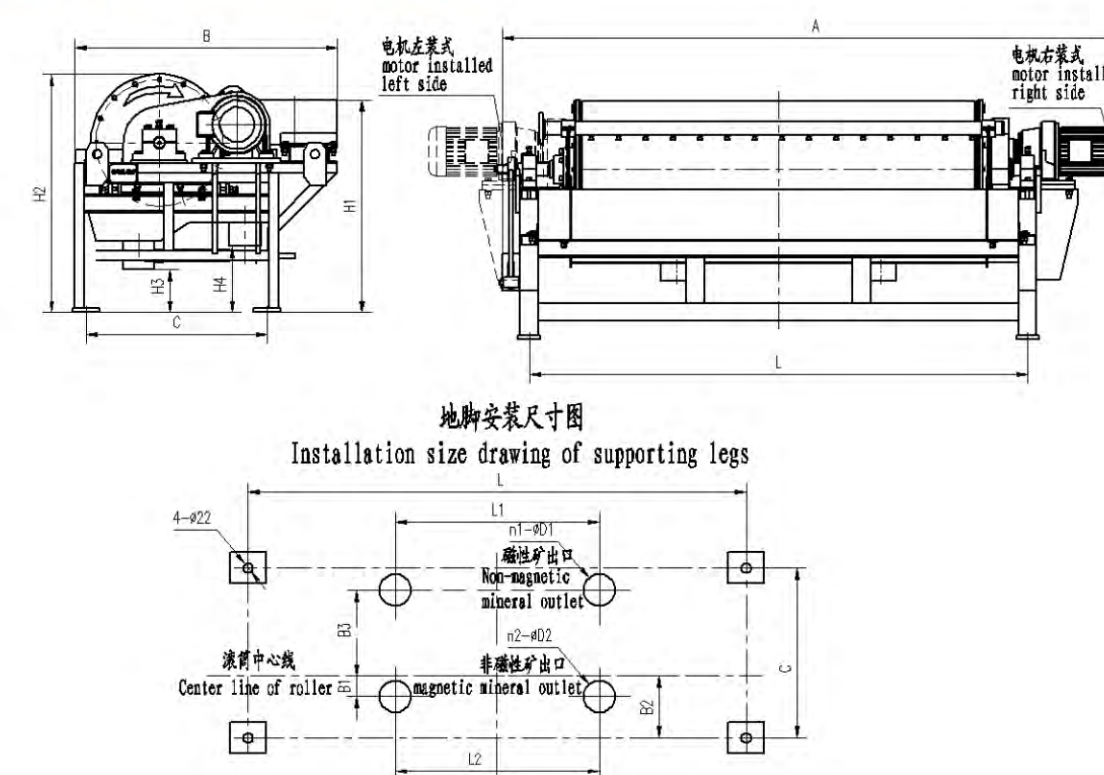
适用范围: CTN系列逆流湿式筒式磁选机主要用于清除有色金属矿及非金属矿中的铁磁性杂质等, 适用于选别粒度不大于0.6mm的矿物。

Application Scope: CTN series separator mainly using for removing ferromagnetic impurities from nonferrous metals ore and nonmetallic ore, suitable for a material less than 0.6mm.

主要特点: 槽体采用流体学公式计算, 能够保证品位的同时提高收得率; 结构简单, 处理量大, 操作方便, 易于维护。

Main Features: Using fluidics formula to calculate for chute, can ensure concentrate grade meanwhile improve concentrate recovery; Simple structure, large handling capacity, convenient to operate, easy maintenance.

外形尺寸图 Dimensions Diagram



湿式筒式磁选机
Wet drum type magnetic separator

技术参数表 Technical Parameters

型 号 Model	圆筒尺寸 (mm) Drum size		筒表磁场 (mT) Drum Surface magnetic Field	转速(r/min) Revolving Speed	处理能力 Handling Capacity		电机功率 (kW) Motor Power	质量 Quality
	筒径 Drum Dia.	筒长 Drum Length			(t/h)	(m3/h)		
CTN-69	600	900	按物料特 性及客户 要求确定 磁感应强度 Magnetic flux density can be decided by material characters & customers' requirements.	40	7~15	20~50	2.2	1150
CTN-612	600	1200		40	10~20	30~65	2.2	1360
CTN-618	600	1800		40	15~30	45~95	2.2	1800
CTN-712	750	1200		35	15~30	45~95	3	1860
CTN-718	750	1800		35	23~45	70~130	3	2510
CTN-912	900	1200		28	23~45	70~130	4	2400
CTN-918	900	1800		28	35~65	105~200	4	3000
CTN-924	900	2400		28	45~85	130~260	4	3600
CTN-930	900	3000		28	55~110	120~340	5.5	4300
CTN-1012	1050	1200		22	25~50	70~150	5.5	3000
CTN-1018	1050	1800		22	38~75	110~230	5.5	3800
CTN-1024	1050	2400		22	50~100	140~300	5.5	4720
CTN-1030	1050	3000		22	63~125	185~380	7.5	5580
CTN-1218	1200	1800		19	45~90	135~280	5.5	5520
CTN-1224	1200	2400		19	60~120	170~370	7.5	6430
CTN-1230	1200	3000		19	72~145	210~440	7.5	7340
CTN-1236	1200	3600		19	90~175	270~530	11	8400
CTN-1530	1500	3000		14	90~180	270~540	11	8950
CTN-1540	1500	4000		14	120~240	350~700	15	10150

注：可按客户要求定制其它安装尺寸及磁场等级的产品，设备要求请定货时注明。磁场系列等级如下(Gs)：2500, 3000, 4000, 5000, 6000, 7000, 8000。

Note: we can design other installation dimensions and magnetic field grade products according to customers' requirement please indicate the equipment requirement in ordering. The magnetic field (Gs) grade as follows: 2500, 3000, 4000, 5000, 6000, 7000 & 8000.

外形及安装尺寸(mm) Outline and installation size(mm)

型 号 Model	A	B	B1	B2	B3	C	D1/D2	H1	H2	H3	H4	L	L1	L2	n1	n2
CTN-69	2100	1280	120	268	418	1020	159	1450	1300	150	210	1400	0	0	1	1
CTN-612	2400	1280	120	268	418	1020		1450	1300			1700	0	0	1	1
CTN-618	3000	1280	120	268	418	1020		1450	1300			2300	0	0	1	1
CTN-712	2450	1540	150	343	493	1270		1500	1450			1700	0	0	1	1
CTN-718	3050	1540	150	343	493	1270		1500	1450			2300	0	900	1	2
CTN-912	2500	1850	150	418	573	1400		1750	1665			1700	0	600	1	2
CTN-918	3100	1850	150	418	573	1400		1750	1665			2300	0	900	1	2
CTN-924	3700	1850	150	418	573	1400		1750	1665			2900	1200	1200	2	3
CTN-930	4300	1850	150	418	573	1400		1750	1665			3500	1500	1500	2	4
CTN-1012	2540	2075	150	473	633	1550		1825	1815			1700	0	600	1	2
CTN-1018	3140	2075	150	473	633	1550		1825	1815			2300	0	900	1	3
CTN-1024	3740	2075	150	473	633	1550		1825	1815			2900	1200	1200	2	3
CTN-1030	4340	2075	150	473	633	1550		1825	1815			3500	1500	1500	2	4
CTN-1218	3260	2430	160	570	730	1800		1900	1970			2300	900	900	2	3
CTN-1224	3860	2430	160	570	730	1800		1900	1970			2900	1200	1200	2	4
CTN-1230	4460	2430	160	570	730	1800		1900	1970			3500	1500	1500	3	5
CTN-1236	5060	2430	160	570	730	1800		1900	1970			4100	1800	1800	3	6
CTN-1530	4500	2750	180	880	1040	2300		2200	2270			3500	1500	1500	3	6
CTN-1540	5500	2750	180	880	1040	2300		2200	2270			4500	2000	2400	3	6